

# Release Notes

---

## Winpos Mega - Version 1046 SP10 Release

---

28 August 2024

---

### Release Notes

Winpos Mega - Version 1046 SP10 Release

28 August 2024

#### Enhancements & Changes

Winpos Mobile: integration with Dojo card payment solution (UK) (#2586)

Slice (Digital Student Card) integration (Finland) (#2865)

Other changes

New option related to 'negative' Discount (e.g. for use as a 'Service Charge' on a bill) (#2902)

Issues Fixed

---

## Enhancements & Changes

### Winpos Mobile: integration with Dojo card payment solution (UK) (#2586)

- Integration with Dojo Pocket running on Dojo's android MobiGo 2 terminal.
- 'All-in-one' solution.



## dojopocket

### Orders and payments in one device

Take orders and payments from one handheld device, made to fit right into an apron pocket.

#### Do more with less

Connect your tools and turn the Dojo Pocket into an EPOS. Take orders and get paid from one handheld device.

#### Turn tables faster

With handheld card machines for all of your staff, you can turn more tables and serve customers faster.

#### Wave goodbye to walkouts

Take upfront payments right after an order. It protects your profits and stops customers waiting around.

#### Take any contactless amount

Need to take a payment over £100? Your device displays a secure virtual PIN pad with no need to insert a card.

## Slice (Digital Student Card) integration (Finland) (#2865)

New integration with Slice digital student card for Finland,

- Uses function button #181.
- Works otherwise the same as the existing, old Tuudo student card integration but with Slice QR code instead.
- Slice QR code is scanned, date in QR is validated against current date, and if okay then student price is allowed.

## Other changes

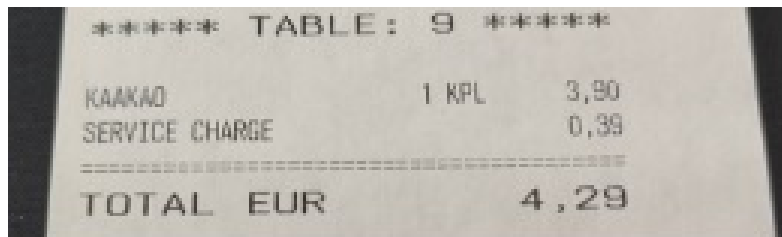
### New option related to 'negative' Discount (e.g. for use as a 'Service Charge' on a bill) (#2902)

New option added which provides improvements to the way a negative discount is presented in the sales basket and on customer receipts, where (for example) the negative discount is used to apply a Service Charge to a table bill.

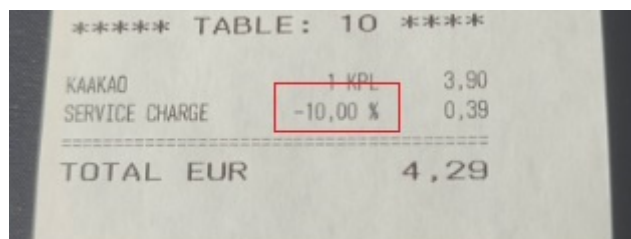
Changes are:

- New parameter setting REG.Negative discount hide quantity = True/False.
- Default is False.
- If True, then:
  - Quantity of any negative discount line is hidden in the sales basket.
  - Quantity of any negative discount line is not printed on a bill or receipt.

So, for example if a Negative Discount of -10% called "Service Charge" is set up on a system and is applied to a bill, then the receipt will print like so:



instead of like so:



## Issues Fixed

- **Mews integration:** Fixed an issue relating to subtotal discounts. (**#2886**)
- **POS (REG):** Fixed a bug with X- and Z-report which meant the reports were printed with zero values the first time they were printed. (**#2598**)
- **POS (REG):** Resolved an issue with setting *Reg.Decimal separator = False* when using Function button 19 (Currency). For example: values such as '1000' that should be '10' were instead entered as '0,10'. (**#2846**)
- **POS (REG):** Fixed an issue where REG would crash when reading an employee card ('parallel card') and trying to pay with SEK. (**#2860**)
- **POS (REG):** Fixed a bug where REG was losing the first number when entering numbers via the touchscreen. (**#2883**)
- **Ticketmaster integration:** Resolved issues which meant that the Ticketmaster integration did not work. (**#2714**)
- **Winpos Mobile:** Fixed an issue where printing a bill did not work in conjunction with control unit (Sweden). (**#2802**)
- **Winpos Mobile:** Fixed a bug where removing an article from a transaction would then apply an incorrect price for the article remaining in the transaction. (**#2882**)