

Release Notes

Winpos Mega - Version 1047 SP3 Release

16 January 2025

Release Notes

Winpos Mega - Version 1047 SP3 Release

16 January 2025

Enhancements & Changes

Adyen Card Type (#3380)

Kitchen Printing Sorting and Grouping using Dish Groups (#2908)

Issues Fixed

Enhancements & Changes

Adyen Card Type (#3380)

Adyen card type is now written to the Code2 field on JournalItem table. This will enable analysis of the card types which end-customers have used to pay with.

Kitchen Printing Sorting and Grouping using Dish Groups (#2908)

New functionality using Dish Groups to provide enhanced sorting and grouping options on Kitchen prints.

The new functionality is controlled by a new option 'Dish groups' which has been added to existing parameter *Kitchen.Print all kitchen articles to all printers*.

When **Kitchen.Print all kitchen articles to all printers = Dish groups** then the Article/Dish Groups assignments define how articles on Kitchen Prints are grouped and sorted.

Note: Dish Groups are maintained in Back office > Maintenance > Articles > Adverts and labels button > Dish group.

Note 2: For Dish Groups to be enabled on the Adverts and labels dialog, existing parameter setting *Guest check.Dish groups* must be set to *True*.

Article maintenance

Code: 206757
 Code 2:
 Description: Soup
 Description 2: Soup
 Remarks:

Adverts and labels

Header 1:
 Header 2:
 Adverts row:
 Bottle refund:
 Scale article:
 Deposit:
 Web page:
 Label:
 Advert:
 Position:
 Print in kitchen: 1 KITCHEN PRINTER
 Print on receipt:
 Sales unit:
 Comparison unit:
 Dish Group: 1 STARTERS
 Scale number:
 Macro:
 Webshop group:
 Max quantity: Reset
 Minimum time:

Dish Group

Number	Description	Creation date	Last modified
1 0	NO GROUP	12/02/2025	30/11/1999
2 1	STARTERS	06/11/2024	30/11/1999
3 2	MAINS	06/11/2024	30/11/1999
4 3	DESSERTS	06/11/2024	30/11/1999
5 4	DRINKS	06/11/2024	30/11/1999
6			

Default Dish Group

Dish group with code = 0 is used as a default dish group. This is used for any article which is set up to be printed to a kitchen printer but which is not assigned to a Dish group.

Note: It is necessary to create Dish group '0' in back office Dish groups maintenance for this to work as a default.

Note 2: Articles which are set up to be printed to a kitchen printer but which do not have any dish groups assigned will not be printed to the kitchen printer if no default Dish group 0 exists.

Dish Group

Number	Description	Creation date	Last modified
1 0	NO GROUP	12/02/2025	30/11/1999
2 1	STARTERS	06/11/2024	30/11/1999
3 2	MAINS	06/11/2024	30/11/1999
4 3	DESSERTS	06/11/2024	30/11/1999
5 4	DRINKS	06/11/2024	30/11/1999
6			

Print preview OK Cancel

Printing behaviour using dish Groups

When 'Print all kitchen articles to all printers = Dish groups', operation is as follows:

- Articles will be printed to the kitchen printer(s) defined in **Adverts and Labels > Print in Kitchen** in back office.
- By default, articles will be printed in groups according to the Dish Group which they are associated with in **Adverts and Labels > Dish Group**. Dish Groups will be printed in Dish Group Number order.
- Each Group will be identified by printing the Group description immediately before the articles belonging to that Group.
- If no Dish Group is assigned to an article when it is output on a Kitchen Print, it will be printed using Dish Group '0' (the default Dish Group).

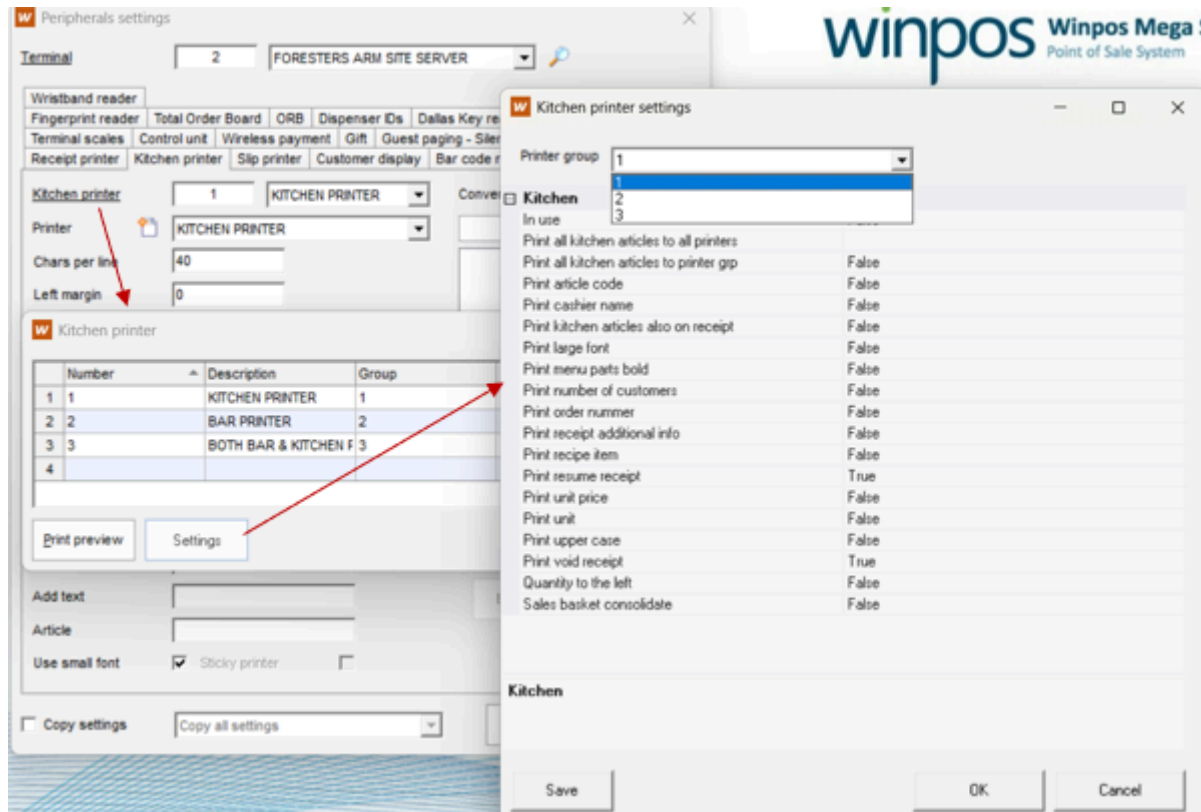
Examples:

Printer in Kitchen	Printer in Bar
<div>*****10***** *****WINPOS***** *****CUSTOMERS 2***** ***STARTERS*** 1 SOUP 1 BBQ CORN RIBS ***MAINS*** 1 CHICKEN SUPREME 1 BAKED FISH ***DESSERTS*** 1 FUDGE BROWNIE 1 APPLE PIE</div>	<div>*****10***** *****WINPOS***** *****CUSTOMERS 2***** ***DRINKS*** 1 HEINEKEN 0% PT 1 RIOJA 175 ML</div>

Related changes

Enhancements have been made to Kitchen Printer Groups which allow 'Kitchen' parameter settings to be maintained against 'Kitchen Printer Groups'.

These are accessed in Back office > Peripherals > Kitchen printer tab > Kitchen printer text link > Settings button:



Issues Fixed

- **Data Transfer:** Fixed an issue with data missing from DispenserTable at HQ. (**#2918**)
- **EMV (Asynch):** Fixed an issue which meant that Async card handling did not work (**#3384**)